



PARTNERSHIP ON AI

**Global**

**Community**

**in**

**Action**

**2025 ANNUAL REPORT**

Partnership on AI (PAI) is a nonprofit global community of academic, civil society, and industry organizations who come together to address the most important questions in AI.

In 2025, we advanced the safety and responsibility of AI systems. We broadened our global community, expanded our expertise, prepared for emerging technology, and shaped conversations around AI's impacts on people, trust, and inclusivity.

## From Our CEO

In the past year, the use cases and applications of AI have expanded significantly—affecting everything from enterprise workflows and worker protections to social relationships and mental health. To meet this moment, Partnership on AI expanded our reach across sectors, industries, and continents to activate a community-wide effort to prioritize the development of AI in the public interest.

We developed resources to help technologists and policymakers better assess and govern AI agents. We applied our track record in synthetic media responsible practices to launch a new focus on AI's impacts on human connection and trust. And we established a foundation for the current state of formal reporting to understand the impacts of AI. Today, we are a trusted source for industry and policy guidance and accountability.

Over the past year, we set the stage for greater global impact. We integrated diverse insights from across our network into international standards and best practices at key events such as the France AI Action Summit in Paris, the Global Summit on AI in Africa in Kigali, and the Asia Tech conference in Singapore. With the addition of 13 new partners, 3 new board members, and the launch of a new European Steering Committee, we are building the world's first inclusive platform for responsible AI.

As we enter our second decade in 2026, our collective impact is clear and our work is urgent. Thank you to our staff, board, partners and collaborators. Together we are building a future where humanity develops AI to contribute to a more just, equitable, and prosperous world.



In partnership,  
Rebecca Finlay  
CEO, Partnership on AI

# Our Year at a Glance



141

partners

19

countries



81

convenings

1530

attendees from

33

countries



20

new resources

8

areas of work



29k

social media followers

267,133

organic social impressions

800M+

earned media impressions



87.4k

website visitors

37

original blogs

1594

downloads of PAI resources

## Media Appearances



Important discussions about safety and responsibility took place at the Paris AI Summit, according to Rebecca Finlay.



PAI's Tina Park reflects on the Participatory AI Research & Practice Symposium that preceded the Paris AI Action Summit.



Rebecca Finlay tells how AI will only deliver competitive advantage when it actually works for people and society.



PAI's Claire Leibowicz weighs in on a journalist's posthumous "interview" with an AI-generated avatar of a school shooting victim.



Rebecca Finlay argues that companies need to be more transparent about their AI failures.

# Fostering a Global Community

In 2025 we strengthened connections amongst our global community at events around the world.

Our team has crossed the globe, connecting with partners and collaborators at key events this year, from the AI Action Summit in Paris, where we discussed trust and the need for a global AI assurance ecosystem, to FAccT in Athens, where we exchanged ideas on Participatory Engagement. Our presence at the Global AI Summit on Africa in Kigali, allowed us to take part in meaningful conversations discussing building a collective action plan for AI across the continent. We brought together our community of Partners, policymakers, and other stakeholders for a series of events alongside the UNGA in New York, to discuss agents and the need for a more robust global AI assurance ecosystem. We closed out the year with our 2025 Partner Forum in San Francisco, fostering conversations with our community centered around trust, the future, international perspectives, and Agents.



Stephanie Bell at the IMF Spring Meetings, Washington, DC



Sonam Jindal (right) at the AI Action Summit, Paris



Felecia Webb (2nd from left) at the Deep Learning Indaba, Kigali, Rwanda



Stephanie Ifayemi (right) and Rebecca Finlay (far right) at the Global AI Summit on Africa, Kigali, Rwanda

A woman with short blonde hair, wearing a red jacket, is speaking into a microphone. She is smiling and looking towards the left. In the foreground, the back of a man's head and shoulder is visible. To the right, another woman with glasses and braids is listening. The background is a blue wall with some blurred lights.

“Joining the Partnership on AI strengthens our  
commitment to fostering collaborative,  
innovative solutions that align AI development  
with societal benefit, amplifying our impact  
through PAI’s global community.”

**BRIAN TSE**  
FOUNDER AND CEO  
CONCORDIA AI

Rebecca Finlay (center), with UC San Diego’s David Danks  
and the Brookings Institution’s Nicol Turner Lee, at the PAI  
Partner Forum, San Francisco

# Expanding Expertise and Leadership

In 2025 we expanded our expertise and leadership in AI across the globe, welcoming new board members, partners, and advisors.



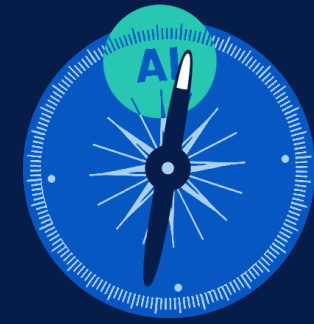
## PAI Changemakers

Recognizing the most influential leaders in AI, PAI's [Changemaker Awards](#), recognized the [leadership and impact](#) of Jeremy Holland, Director of AI Research at Apple and PAI Board Chair and Francesca Rossi, IBM Fellow, Global Leader for Responsible AI and AI Governance and Founding PAI Board Director.



## New Board Members

We welcomed [new members](#) Christina Colclough, founder of The Why Not Lab (*left*), and Helen King, VP of Responsibility at Google DeepMind (*right*), to the PAI Board of Directors.



## SAIGE Council

We established a global standing [advisory body](#) of interdisciplinary researchers and experts to act as advisors, ensuring PAI's work meets the highest standards of independence and rigor while remaining attentive to external and emerging trends.



## European Steering Committee

We launched PAI's first [international steering committee](#), our first step in building stronger connections between global AI hubs to foster a shared understanding of critical issues and align on best practices.



## Enterprise AI Steering Committee

A leading forum addressing the most important questions on the future of AI, our [Enterprise AI Steering Committee](#) defines and guides responsible AI use for enterprises and organizations.



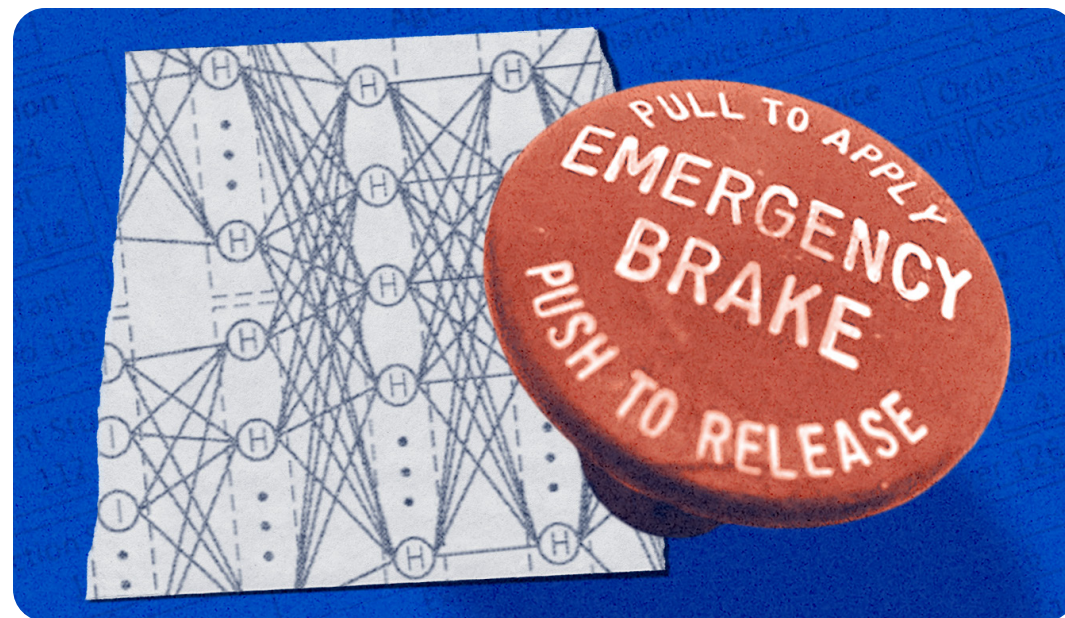
## New Partners

We welcomed 13 new global partners including nonprofits, research institutions, and private companies from around the world.



# Preparing for the Age of Agents

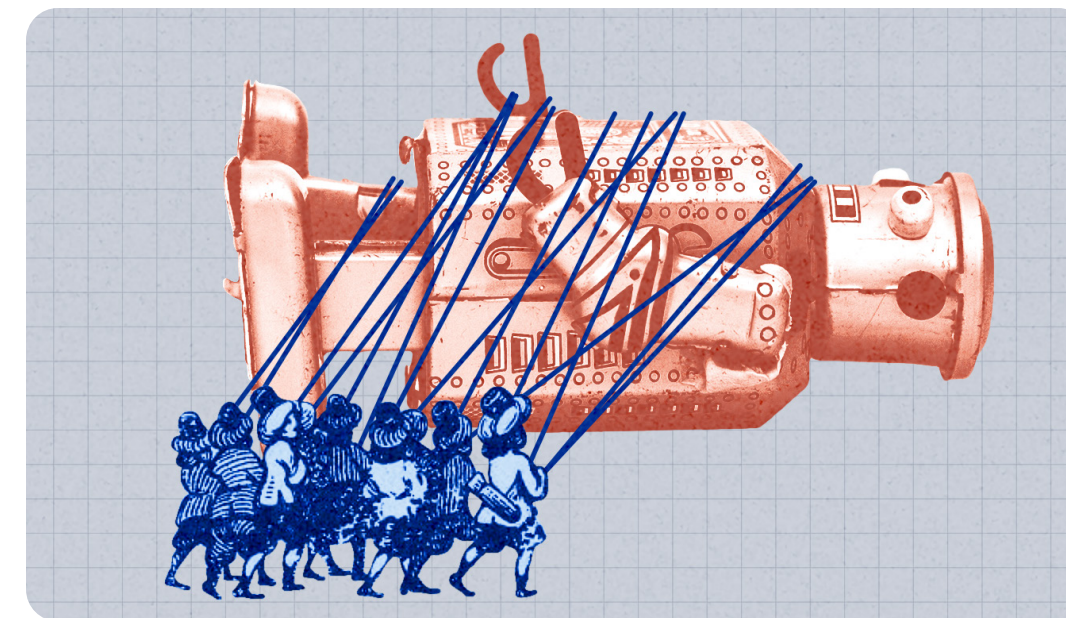
As agents become more capable and widespread, so do their risks. Understanding agent capabilities, global governance challenges, and the right questions to ask are essential in preparing for their impact. This year, we focused on understanding these challenges in three timely reports.



## Prioritizing Real-Time Failure Detection in AI Agents

When agents take actions, the nature of risk fundamentally changes. To address these risks, we need real-time failure detection.

[READ THE REPORT →](#)



## AI Agents & Global Governance: Analyzing Foundational Legal, Policy, and Accountability Tools

Agents can amplify threats that cross national borders; addressing these challenges requires more than national regulation. It requires global governance.

[READ THE REPORT →](#)



## Preparing for AI Agent Governance: A Research Agenda for Policymakers and Researchers

A challenge for policymakers is not whether to regulate agents, but how when impacts remain uncertain. Understanding the evidence needed to make informed decisions is the first step.

[READ THE AGENDA →](#)



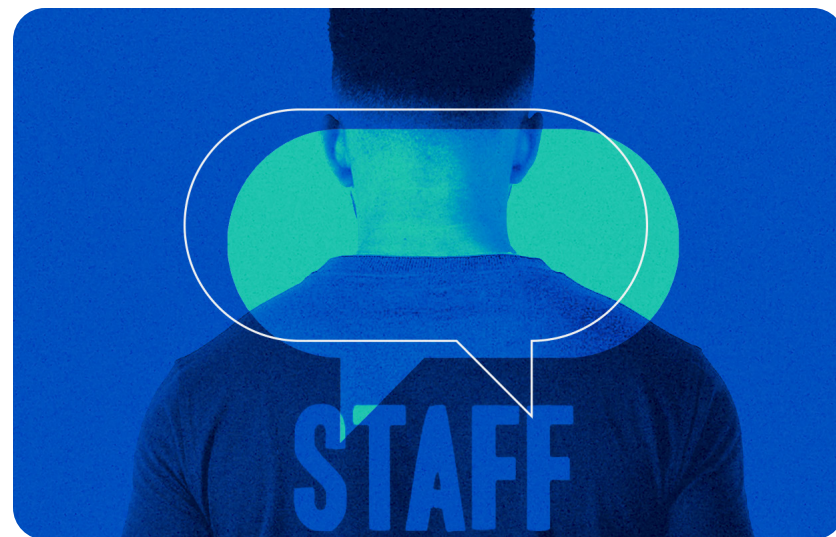
“Ensuring the safety, security, and trustworthiness of AI is a global challenge that requires collective wisdom and cooperation. By joining the Partnership on AI, we look forward to contributing Korea’s perspectives and experiences while learning from our peers worldwide.”

**MINN SEOK CHOI**  
ASSISTANT DIRECTOR FOR AI SAFETY POLICY  
AND STRATEGIC COOPERATION  
KOREA AISI



# AI for Human Flourishing

As AI capabilities have evolved, we've collaborated with partners across industries to prepare for its potential impacts. From impacts to labor and workers, to trust in information and media, this year highlighted the growing need to understand how AI impacts people and society.



## Workers Participating in Transparency: Addressing the Gap in AI Transparency on Labor

Transparency efforts largely omit impacts on workers. To address this gap, we must include workers as a topic, audience, and participants in transparency.

[READ THE REPORT →](#)



## Safeguarding Trust and Dignity in the Age of AI-Generated Media

Based on the work from PAI's analysis of case studies submitted by 18 organizational supporters of the Synthetic Media Framework, we crystallized key actionable takeaways.

[READ THE ANALYSIS →](#)



## From Deepfakes to Disclosure: PAI Framework Insights from Three Global Case Studies

The final round of case studies from Google, and civil society organizations Meedan and Code for Africa, in support of our PAI's Synthetic Media Framework.

[READ THE CASE STUDIES →](#)



## Partnership on AI's Newest Area of Work: AI and Human Connection

Built upon our work in AI and Media Integrity, we are ultimately responding to the pressing question: How can AI strengthen and sustain informed and connected communities?

[READ ABOUT THE WORK →](#)



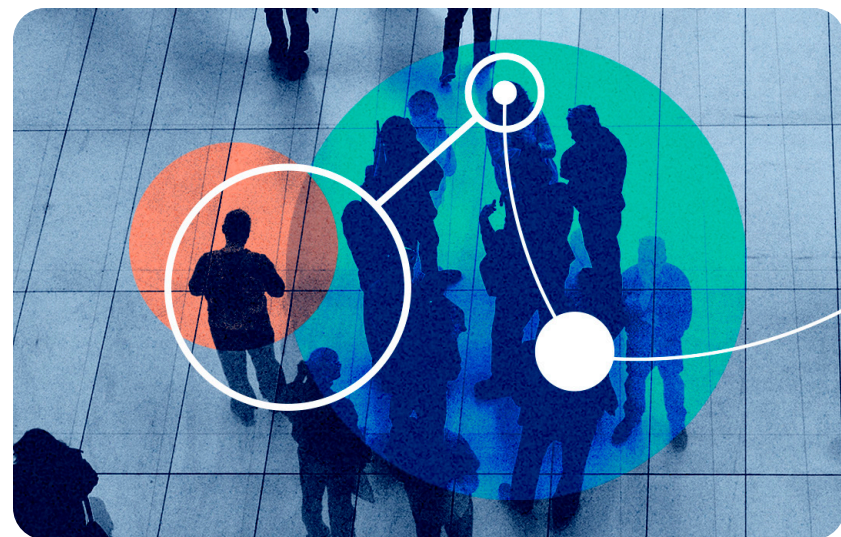
“We are glad to deepen our collaboration with Partnership on AI by joining as a partner. PAI has long been a leader in addressing AI's most important challenges, and we welcome the opportunity to continue to collaboratively work with the broader community.”

**DR. REBECCA PORTNOFF**  
HEAD OF DATA SCIENCE & AI  
THORN

**THORN** <sup>1</sup>

# Inclusivity and Trust in AI

AI is reshaping our lives and society. Inclusivity and trust in AI between people impacted by it and organizations using it remains a challenge. People impacted by AI are left out of critical conversations while the most vulnerable people are left to grapple with discrimination at a systemic level. In 2025, we narrowed in on how to bridge this gap.



## Guidance for Inclusive AI

It is more important than ever for the people and organizations who develop and deploy AI-driven systems to work in close partnership with people impacted by it.

[READ THE GUIDANCE →](#)



## Participatory & Inclusive Demographic Data Guidelines

The rapid adoption and innovation of AI systems has left users vulnerable to algorithmic discrimination. To address these challenges, we developed the Participatory & Inclusive Demographic Data Guidelines.

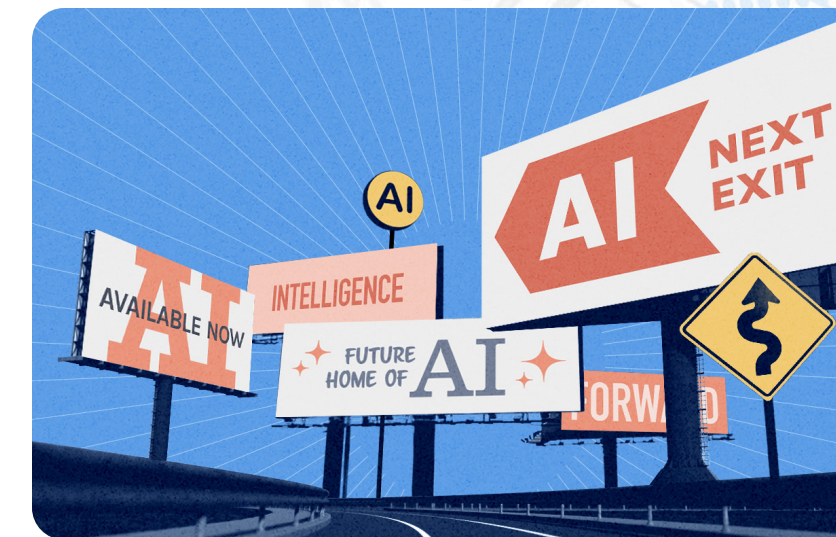
[READ THE GUIDELINES →](#)



## Disclosure of AI-related Impacts, Risks, and Opportunities

As corporate AI use spreads, decision-makers need insight into how companies address issues such as bias, privacy, and environmental impacts.

[READ THE REPORT →](#)



## Responsibly Navigating the Enterprise AI Landscape: Promises, Challenges, and Opportunities

How organizations use AI plays a critical role in shaping its real-world impact. Our latest report details the challenges and opportunities enterprises face in responsible AI adoption.

[READ THE REPORT →](#)



“Our collaboration within the Enterprise AI Steering Committee is vital. By creating a community of practice focused on the enterprise, we can guide the responsible development of AI to benefit society.”

**PAULA GOLDMAN**  
CHIEF ETHICAL AND HUMANE USE OFFICER  
SALESFORCE



# Shaping Global Policy

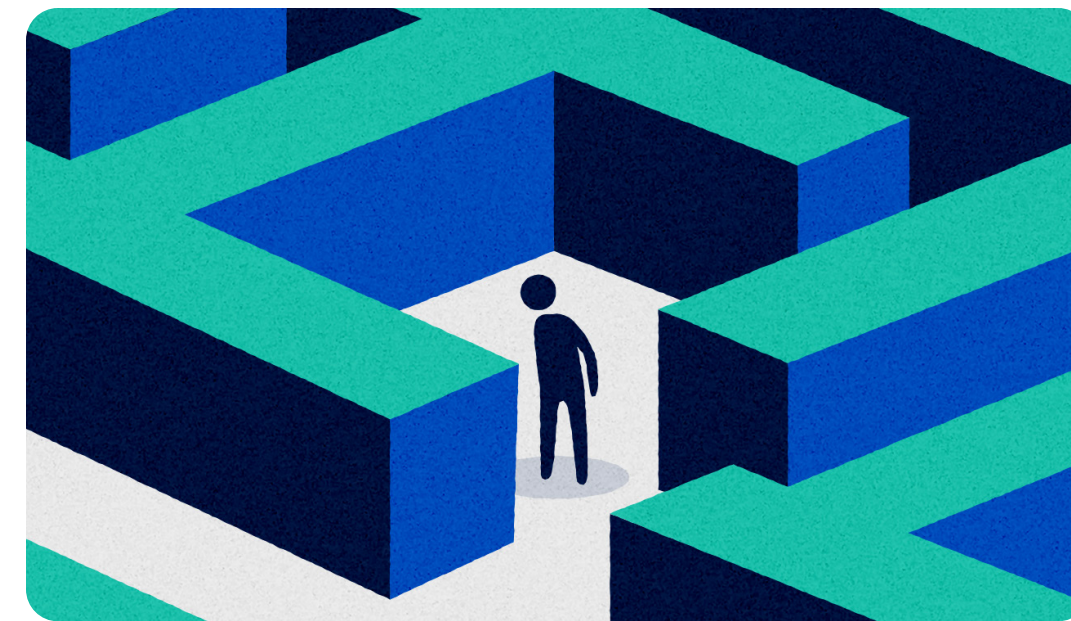
Rapid advancements in AI are presenting exciting opportunities but also significant challenges. In 2025, we focused on advancing global policy through documenting the impacts of foundation models, analyzing interoperability in governance, and informing policy strategy.



## Documenting the Impacts of Foundation Models: A Progress Report on Post-Deployment Governance Practices

Cited in a NIST report, this report examines how model providers are implementing documentation, identifies challenges, and offers recommendations.

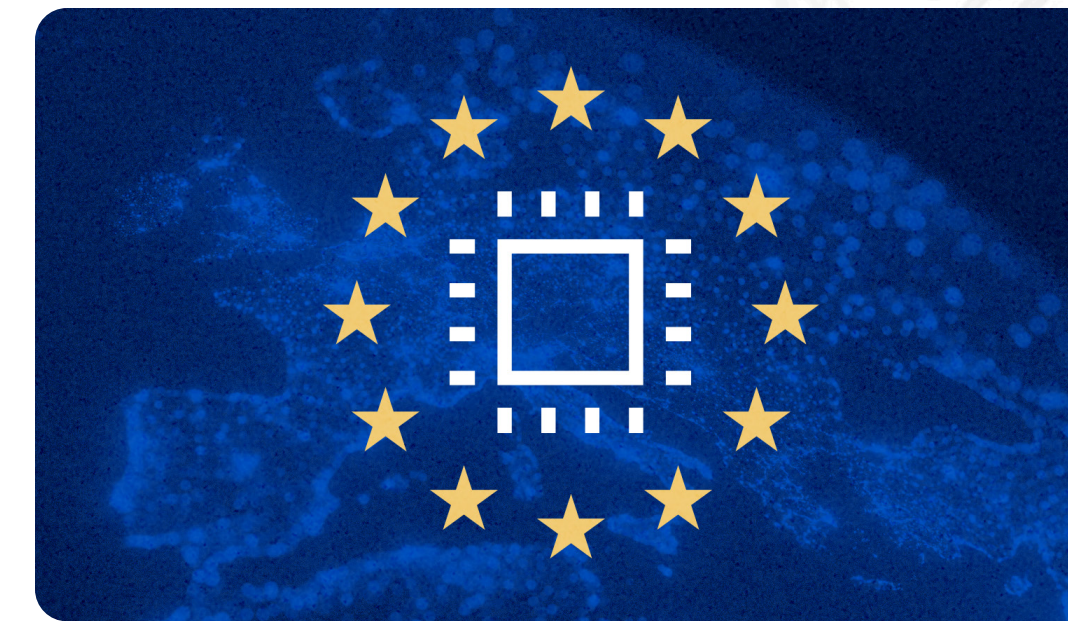
[READ THE REPORT →](#)



## Decoding AI Governance: A Toolkit for Navigating Evolving Norms, Standards, and Rules

In AI governance, clarity and alignment is needed to avoid negative outcomes from fragmentation and geopolitical volatility.

[READ THE TOOLKIT →](#)



## Shaping the EU AI Act's Code of Practice

The EU's General-Purpose AI (GPAI) Code of Practice was approved by the AI Board and EU Commission, confirming that it meets the requirements of the AI Act.

[READ THE STORY →](#)



“The governance choices we make today will determine how fully society can benefit from AI. By collaborating with PAI, we are strengthening a global community committed to practical solutions, shared learning, and responsible innovation.”

MIRIAM VOGEL  
PRESIDENT AND CEO  
EQUALAI

**EQUALAI**

# Who we are

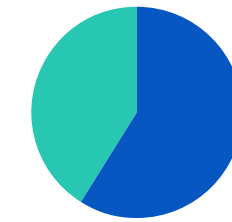
PAI seeks to ensure that AI technologies are built to benefit and empower as many people as possible.

At the heart of our work is a global community of partners committed to the responsible development and use of AI. With the help of our PAI community we are able to uphold the tenets that guide us in advancing positive outcomes for people and society.

## Demographics

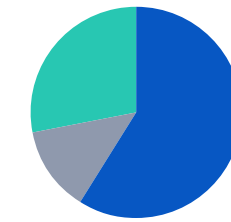
### STAFF

#### Gender



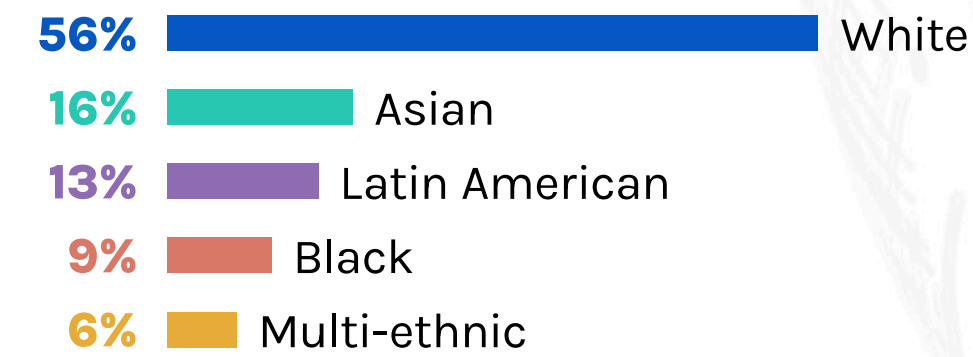
**59%** Female  
**41%** Male

#### Sexual Orientation



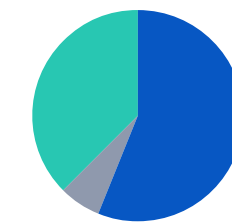
**59%** Straight  
**28%** LGBTQ+  
**13%** Decline to state

#### Race/Ethnicity



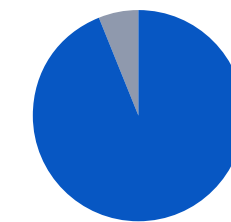
### BOARD OF DIRECTORS

#### Gender



**56%** Female  
**38%** Male  
**6%** Decline to State

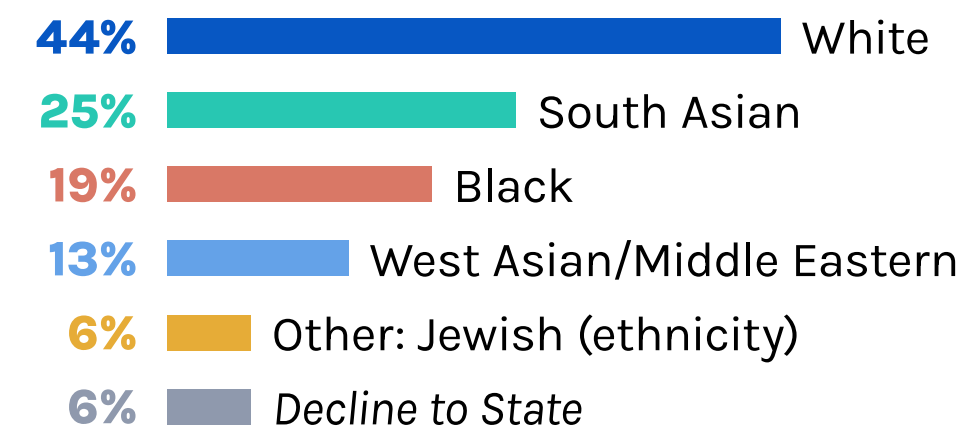
#### Sexual Orientation



**94%** Straight  
**6%** Decline to state

#### Race/Ethnicity

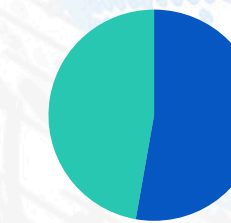
More than one selection permitted;  
total exceeds 100%



## Financials

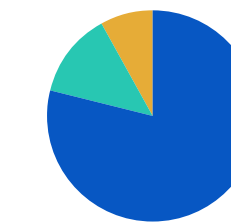
PAI is an independent, nonprofit 501(c)(3) organization, funded by charitable contributions from philanthropy and corporate entities. Our 990 forms from previous years can be found on our [funding page](#).

### Revenue



**53%** Corporate  
**47%** Philanthropy

### Expenses



**79%** Programs & Research, Policy  
**13%** Governance & Administration  
**8%** Fundraising

# Thanks to our Funders

**Adobe**

**amazon**



**Capital One**

**credo | ai**



**Ford Foundation**

**Google**

**Google DeepMind**

**IBM**

**Inflection**

**intel.**

**IPG**

**intuit.**

**KNIGHT FOUNDATION**

**Luminate**  
Building stronger societies

**MacArthur Foundation**

**Meta**

**MetLife**

**Microsoft**

**OpenAI**

**Prolific**

**SONY**



# Thanks to our Partners

A&O Shearman	Article 19	Carnegie-Tsinghua Center for Global Policy	Data & Society	G3ict	Intel	MetLife Foundation	OpenAI	Starling Lab for Data Integrity	United Nations Development Programme
ACLU	Associated Press	Center for Data Innovation	Data Economy Policy Hub	GLAAD	Internet Archive	Microsoft	OPTIC Technology Network	Surdna Foundation	United Nations Population Fund
Ada Lovelace Institute	Association for Computing Machinery	Center for Democracy and Technology	DataKind	Google	Interpublic Group (IPG)	Mila – Quebec Artificial Intelligence Institute	Oxford Internet Institute	TechEquity Collaborative	UCL Engineering
Adobe	Association for the Advancement of Artificial Intelligence (AAAI)	Center for Human-Compatible AI	Data Privacy Brazil	Google.org	Intuit	MIT Initiative on the Digital Economy	PolicyLink	Technovation	Upturn
AI4ALL	3A Institute (ANU School of Cybernetics)	Center for Information Technology Policy	DeepMind	Hacks/Hackers	Invisible Technologies	MIT Media Lab	Prolific	Tech Policy Lab	USC Center for AI in Society
AI and Faith	BBC	Centre for Internet & Society	Demos	HCRI, Brown University	Joint Center for Political and Economic Studies	MITRE	Resaro AI	The Alan Turing Institute	Vision and Image Processing Lab – University of Waterloo
AI Forum of New Zealand	Berggruen Institute	Chatham House	Digital Asia Hub	Human Rights Data Analysis Group	JPMorganChase	Montreal AI Ethics Institute	Responsible AI UK	The Future Society	Wadhvani AI
AI Now Institute	Berkeley Center for Law & Technology	Chief Executives for Corporate Purpose	Digital Catapult	HRI Lab Tufts	Korea AI Safety Institute	Mozilla Foundation	Sama	The Hastings Center	Wikimedia Foundation
Ai2 (Allen AI)	Berkman Klein Center at Harvard University	CIFAR	Duke Reporter's Lab	IBM	Leverhulme Centre for the Future of Intelligence (CFI)	New America Foundation	Schwartz Reisman Institute for Technology and Society	Centre for Artificial Intelligence Research (CAiRE)	WITNESS
Alliance for AI	Business for Social Responsibility	Code for Africa	EqualAI	IKEA – Ingka Group	Longpath Labs	Next Generation Artificial Intelligence Research Center (AI Center)	SeedAI	Thomson Foundation	Women in Machine Learning & Data Science
Amazon	CBC/Radio-Canada	Concordia AI	Eticas Foundation	Innovation Center for Artificial Intelligence (ICAI)	MacArthur Foundation	North American Broadcasters Association	Shift7	Thorn	XPRIZE
American Association for the Advancement of Science (AAAS)	Capital One	Cornell CIS	Fairly AI	Insight SFI Research Centre for Data Analytics	Markkula Center for Applied Ethics	Software.org: The BSA Foundation	Skoll Foundation	Underwriters Laboratories	
American Psychological Association	Carnegie Endowment for International Peace	Creative Commons	Ford Foundation	Institute for the Future of Work	Mastercard	Omidyar Network Fund	UNICEF	United for Respect	
Annie E. Casey Foundation		Credo AI	Fraunhofer IAO		Meedan	Online News Association	Sony		
Apple			Full Fact		Meta				
			Future of Life Institute						
			Future of Privacy Forum						



**PARTNERSHIP ON AI**

[partnershiponai.org](https://partnershiponai.org)